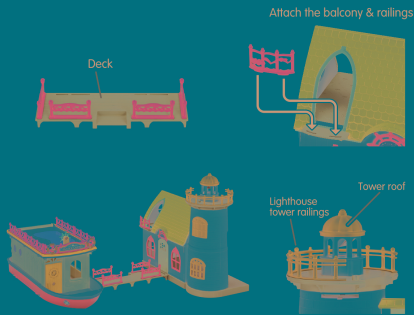


Attach the railings to the deck, balcony and tower as shown



Use the deck as a bridge to the Seaside Cruiser House Boat

Apply the label as shown

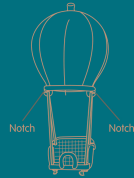
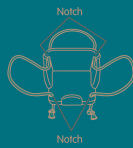


Apply the below labels anywhere



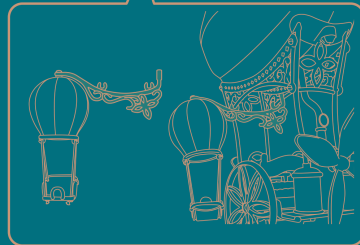
Assembling the hot air balloon

- ① Attach the long string to the seat as shown
- ② Attach the string to the balloon as shown



Insert the hot air balloon swivel into the hole in the tower. Attach the other end of the swivel to the top of the hot air balloon as shown

Attach the hot air balloon to the Sky Ride Adventure (sold separately) as shown



Insert the light from the Light & Curtains Set (sold separately) into the slot on the ceiling

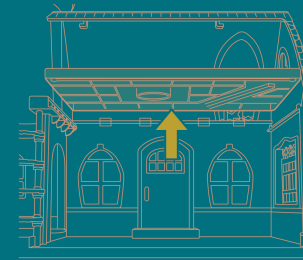


Place the ladder in different positions as shown

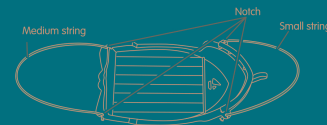


Connect the ladder to the Sky Ride Adventure (sold separately)

Remove the 2nd floor piece by pushing the floor upwards

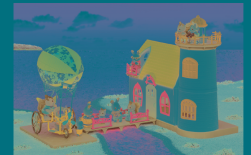


Attach the small and medium string to the boat bed as shown



The boat bed can hang from the hooks on the ceilings as shown. Attach the ladder to the boat bed as shown.

The floor piece can be used in various ways pictured below



Use as a landing platform for the Sky Ride Adventure (sold separately)



Connect to the Cozy Cottage (sold separately)